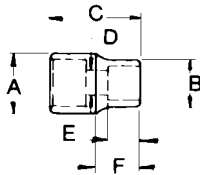


**NEW
 SIZE***

6 Point 1" Drive Impact Sockets

Product Number	Opening, Inches	Weight, lbs.	A Drive End	B Wrench End	C Overall Length	D Bolt Clearance	E Wrench Depth	F Length to Shoulder
22-024	3/4	1.31	2.125	0.763	2.062	0.546	0.500	0.812
22-026	13/16	1.38	2.125	0.826	2.125	0.609	0.531	0.875
22-028	7/8	1.40	2.125	0.888	2.187	0.671	0.531	0.875
22-030	15/16	1.39	2.125	0.953	2.187	0.671	0.625	0.875
22-032	1	1.48	2.125	1.015	2.250	0.671	0.656	0.875
22-034	1-1/16	1.46	2.125	1.077	2.250	0.703	0.656	0.875
22-036	1-1/8	1.55	2.125	1.133	2.375	0.796	0.687	0.875
22-038	1-3/16	1.54	2.125	1.204	2.437	0.796	0.750	0.875
22-040	1-1/4	1.52	2.125	1.267	2.437	0.828	0.812	0.875
22-042	1-5/16	1.64	2.125	2.125	2.562	0.953	0.843	
22-044	1-3/8	1.84	2.250	2.250	2.562	0.953	0.843	
22-046	1-7/16	1.84	2.250	2.250	2.562	1.015	0.843	
22-048**	1-1/2	1.99	2.250	2.312	2.625	1.078	0.875	1.750
22-050	1-9/16	1.91	2.250	2.375	2.625	1.078	0.875	1.750
22-052	1-5/8	2.04	2.250	2.437	2.625	1.140	0.875	1.750
22-054	1-11/16	2.16	2.250	2.500	2.687	1.203	1.000	1.812
22-056**	1-3/4	2.33	2.250	2.625	2.687	1.203	1.000	1.812
22-058	1-13/16	2.60	2.250	2.750	2.750	1.265	1.000	1.875
22-060	1-7/8	2.66	2.250	2.750	2.875	1.328	1.093	2.000
22-062	1-15/16	2.86	2.250	2.875	2.875	1.328	1.093	2.000
22-064	2	3.13	2.250	3.000	2.937	1.390	1.093	2.062
22-066	2-1/16	3.24	2.250	3.000	3.062	1.453	1.218	2.187
22-068	2-1/8	3.64	2.375	3.125	3.125	1.453	1.218	2.250
22-070	2-3/16	3.94	2.375	3.250	3.125	1.453	1.218	2.250
22-072	2-1/4	3.91	2.375	3.250	3.250	1.515	1.312	2.375
22-074	2-5/16	4.33	2.375	3.375	3.312	1.578	1.312	2.500
22-076	2-3/8	4.72	2.375	3.500	3.312	1.578	1.312	2.500
22-078	2-7/16	4.87	2.375	3.500	3.500	1.703	1.375	2.625
22-080	2-1/2	5.40	2.375	3.750	3.500	1.703	1.375	2.625
22-082	2-9/16	6.11	2.375	3.750	3.500	1.765	1.375	2.625
22-084	2-5/8	6.63	2.375	3.750	3.687	1.828	1.468	2.812
22-086	2-11/16	6.27	2.375	4.000	3.687	1.828	1.468	2.812
22-088	2-3/4	6.26	2.375	4.000	3.687	1.890	1.500	2.812
22-090	2-13/16	6.28	2.375	4.000	3.875	1.953	1.625	3.000
22-092	2-7/8	6.37	2.375	4.000	3.937	1.953	1.625	3.062
22-094	2-15/16	6.74	2.375	4.125	3.937	1.953	1.625	3.062
22-096	3	7.30	2.375	4.250	4.062	2.140	1.718	3.187
22-100	3-1/8	7.76	2.375	4.375	4.125	2.140	1.718	3.250
22-104	3-1/4	8.51	2.375	4.500	4.125	2.140	1.718	3.250
22-108	3-3/8	9.20	2.375	4.750	4.500	2.390	1.937	3.375
22-112	3-1/2	9.28	2.375	4.750	4.500	2.390	1.937	3.375
22-116	3-5/8	10.33	2.375	5.000	4.500	2.390	1.937	3.375
22-118*	3-7/8	12.20	3.248	5.103	5.235	2.870	2.400	3.810
22-120*	4	14.90	3.248	5.243	5.360	2.870	2.510	3.900
22-122*	4-1/8	15.40	3.248	5.383	5.360	2.870	2.600	3.860
22-124*	4-1/4	16.20	3.248	5.523	5.485	2.870	2.740	3.940
22-126*	4-1/2	17.40	3.248	5.803	5.610	3.100	2.830	3.990

**Can be used for removal of Budd Wheels.

ASME B107.2

Fed'l Spec. GGG-W-660a

